



## UFEB1317/D Universal Car Fire Extinguisher Bracket Installation Manual

Thank you for purchasing The Bracketeer Universal Car Fire Extinguisher Bracket. Installation should only take around 10-15 minutes and will not require the drilling of any holes. Please refer to [www.thebracketeer.com](http://www.thebracketeer.com) for compatibility details and installation video. See back for installation examples.

**What's Included:**

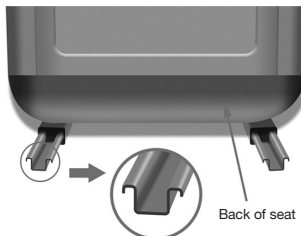
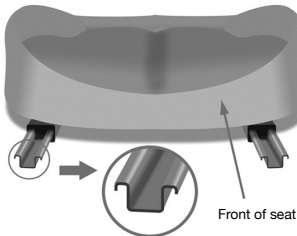
- 2 x Clamping Loops
- 2 x Multi-Drilled Arms
- 1 x Adjustable Spacer Bar
- 2 x Allen Keys
- 2 x Double-Sided Tape
- 4 x M6 Bolts
- 2 x M6 Set Screws
- 4 x M5 Bolts

### You'll need to provide the following:

- Blue thread lock
- Socket to remove seat mount nuts or bolts (only if using Mounting Option B)
- Fire extinguisher with cradle hole spacings of approx 4-1/4", 4-9/16", 4-7/8" or (108mm, 116mm or 124mm)

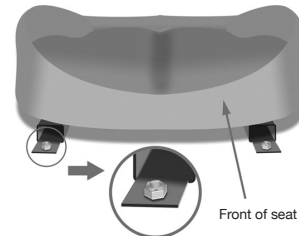
#### Mounting Option A - Clamping Onto Seat Rails

If the vehicle has a standard slider assembly, the Clamping Loops drop onto the seat rails at the front of the passenger seat. The Bracket may also be mounted behind the seat in two seater vehicles if there is an adjuster handle preventing front mounting.



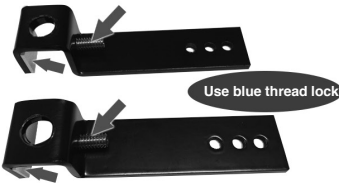
#### Mounting Option B - On Seat Frame Bolts

If the vehicle has a bolt-on seat frame, the Clamping Loops can be inverted for mounting onto vehicle seat mount points.



#### Step 1A - Fit Set Screws & Tape

Install the 2 x M6 set screws into the end of each clamping loop so that the thread is just protruding on the inside of the loop. Peel backing off one side of double-sided tape and stick on inside of outer edge of Clamping Loop, then peel off remaining backing.



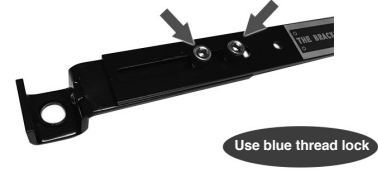
#### Step 2A - Attach Clamping Loops

Attach Clamping Loops to Adjustable Spacer Bar with 4 x M6 bolts. Note - Clamping Loops can be mounted either on top or underneath to provide best clearance. For regular installations use two outer holes, for wider width use the center and end hole. Finger-tighten only.



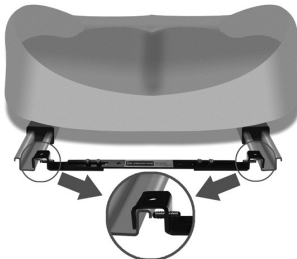
#### Step 1B - Attach Clamping Loops

Attach Clamping Loops to Adjustable Spacer Bar with 4 x M6 bolts. Note: Clamping Loops can be mounted either on top or underneath to provide best clearance. For regular installations, use two outer holes, for wider width use the center and end hole. Finger-tighten only.



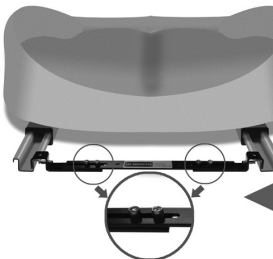
#### Step 3A - Install Bracket Onto Rails

Adjust width of Universal Bracket so that Clamping Loops drop down onto the inner lip of the seat rail. Tighten set screws at either end.



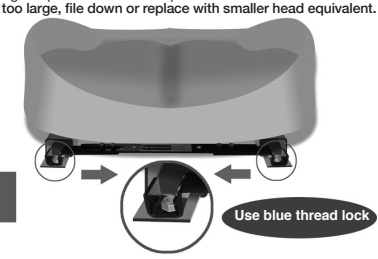
#### Step 4 - Tighten Bolts

Slide Adjustable Spacer Bar left or right to provide best position for extinguisher. Tighten bolts at either end of Adjustable Spacer Bar.



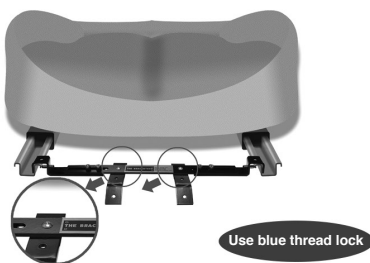
#### Step 2B - Bolt Bracket onto Seat Mount Points

Remove the nuts or bolts from the seat mount. Adjust width of Universal Bracket to align with seat mounts, then bolt through the holes of the Clamping Loop onto seat mount points. If the head of the nut or bolt is too large, file down or replace with smaller head equivalent.



#### Step 5 - Install Multi-Drilled Arms

Install Multi-Drilled Arms onto the Adjustable Spacer Bar using 2 x M5 bolts. Arms can be mounted using any hole pointing upward or downward to best locate extinguisher.



#### Step 6 - Install Extinguisher Cradle

Secure the cradle supplied with your extinguisher onto the Multi-Drilled Arms using 2 x M5 bolts.



#### Step 6 - Install Extinguisher

Double-check tightness on all bolts and nuts. Install extinguisher into cradle and then move seat to check clearance. Relocate Multi-Drilled Arms if necessary to improve clearance. **Job is now complete!**



# UFEB1317/D Universal Car Fire Extinguisher Bracket

---

## Specifications:

Material:	A572 grade 50 steel
Finish:	Satin black electrophoresis
Hardware:	Stainless steel
Shipping Weight:	20oz. (567g)
Installed Weight:	17oz. (482g) (excluding extinguisher and cradle)
Shipping Dimensions:	12-5/8" x 2-1/4"x 2-1/4" (321mm x 57mm x 57mm)
Cradle Hole Spacing:	4-1/4", 4-9/16", 4-7/8" or (108mm, 116mm or 124mm) center to center
Seat Rail Spacing:	11-3/4" to 18-7/16" (298mm to 468mm) inside edge to inside edge
Bolt Mount Spacing:	12" to 17-1/2" (305mm to 445mm) center to center

## Application Notes:

The Bracketeer Universal Car Fire Extinguisher Bracket can be assembled and installed in many different configurations. If you need to increase clearances, consider mounting the Adjustable Spacer Bar under the Clamping Loops and the Multi Drilled Arms on top of the Adjustable Spacer Bar. Washers or Spacers can also be used to lower or raise components.

Always mount the head of the extinguisher in a location that is least likely to cause interference with passenger feet to minimize risk of accidental discharge.

It is recommended to remove the extinguisher on a monthly basis and gently shake the canister to ensure the dry chemical does not become compacted.

## The following are actual examples to achieve best installation:

Jeep Wrangler & C6 Corvette - Bolt the Adjustable Spacer Bar under the Clamping Loops using inner holes to provide a narrower adjustment width.

Subaru WRX, Forester, Impreza, Outback and Crosstrek, Mazda Miata/MX5, Genesis Coupe, Toyota Tundra, Tacoma and FJ Cruiser - If "Mounting Option A" does not allow enough seat movement, invert the Clamping Loops and bolt directly onto seat mount points at the front or rear of the seat using "Mounting Option B". If the OE seat mount bolts have a captured washer or sleeve that does not fit within the Clamping Loop, it will need to be cut or ground down or replaced with high grade bolts with standard hex head or Allen head. These are available from automotive accessory retailers or good hardware stores.

Gen 5 Mustang - Bolt the Adjustable Spacer Bar under the Clamping Loops to achieve a lower mounting height to clear adjuster handle.

Gen 6 Mustang - Use a thick flat washer (not supplied) under the head of the 4 x M6 bolts to prevent the end of the bolt protruding below the bracket. This will allow the bracket to sit down tight against the plastic seat mount covers.

Gen 5 Camaro - For vehicles with adjuster handle on the passenger side, use a shorter 2lb (1kg) extinguisher. The bracket can either be clamped onto the rails, or to maximize the forward-seat movement, it can also be bolted under the front of the seat rail using the existing holes at the front of the rail and the holes in the top of the Clamping Loops (an additional 2 bolts and nuts will be required).

GM A-Body, 67-69 Camaro and Firebird - Invert the Clamping Loops and bolt directly onto seat mount points. (Mounting Option B) If the OE seat mount bolts or nuts have a captured washer or sleeve that does not fit within the Clamping Loop, it will need to be ground down to fit or replace with high grade nuts or bolts with standard hex head.

Examples of installations can be seen at [www.thebracketeer.com](http://www.thebracketeer.com) If you are still unsure of installation, please contact The Bracketeer.

## Disclaimer:

By installing The Bracketeer Universal Car Fire Extinguisher Bracket you agree to defend, indemnify and hold harmless The Bracketeer its member companies, and their divisions, subsidiaries, parents, affiliates, partners, and their respective past, present and future officers, directors, stockholders, trustees, employees, agents, insurers, servants, managers, estates, predecessors and/or successors in interest, representatives, assigns, attorneys and all other persons, firms, or corporations with whom any of the forgoing may have been, are now, or may thereafter be affiliated (collectively "Releasees"), from any and all claims, charges, injuries (including, but not limited to, death), actions, causes of action, sums of money due, suits, debts, liens, covenants, contracts, obligations, costs, expenses, damages (including special, general, incidental, consequential, or other damages), judgments, agreements, promises, demands, claims for fees and costs, or liabilities whatsoever, in law or equity, arising out of or relating to your use (lawful or unlawful).

The Bracketeer recommends installation on passenger side of vehicle to prevent risk of obstruction to pedals should the extinguisher or bracket dislodge while driving.

The Bracketeer provides fitment information based on standard seat rail and seat bracket mount design. Please refer to [www.thebracketeer.com/compatibility](http://www.thebracketeer.com/compatibility) for more detailed information to ensure fitment before purchasing. The Bracketeer will not be held liable for purchases made for the incorrect application, and a restocking fee may be required. If you have any questions, please contact us before making your purchase.

The Bracketeer Universal Car Fire Extinguisher Bracket may limit some of the full forward or full rear-ward (when mounted on the back of the seat) lateral movement of the seat, however it is not typically enough to restrict optimal seating position. Please take this into consideration before purchasing.

The Bracketeer is a registered trademark of The Bracketeer LLC.

©2017 The Bracketeer. All rights reserved.