



Installation Instructions MS148-01 '64-'66 Mustang Trunk Hinges

*Please read all of the instructions thoroughly before beginning the installation. If you do not feel that you have the mechanical aptitude to complete the job in a safe manner, Eddie Motorsports strongly recommends that you employ the services of a knowledgeable technician to perform the installation.

*Before beginning the installation, take note of your deck lid's fit and finish (taking photographs would be best). Pay close attention to the width of the seams, alignment of the deck lid to the fenders, cowl, etc. This will help in the final adjustment of the lid and prevent you from spending time trying to correct a pre-existing condition.

*We recommend that you use painter's tape to liberally mask off the edges of your trunk lid and fenders to protect your paint. Also, place a blanket or towels over the

back cowl as the stock hinges can swing up and contact your car when the trunk lid is removed. ***Eddie Motorsports will not be held responsible for scratches or damages that occur during the installation process.***

* Do not attempt the installation alone. There are several steps in the installation process that require two people to complete safely.

* To prevent galling of stainless steel fasteners, apply anti-seize compound to all bolt threads. Fasteners that have seized will not be warrantied.

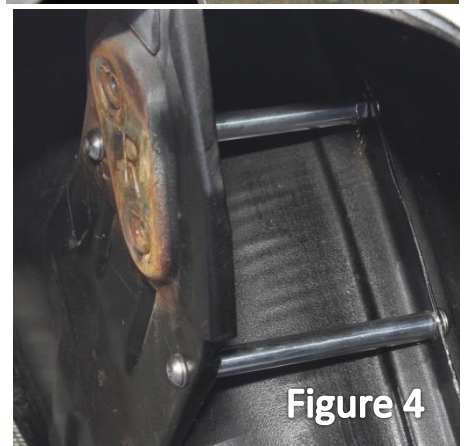
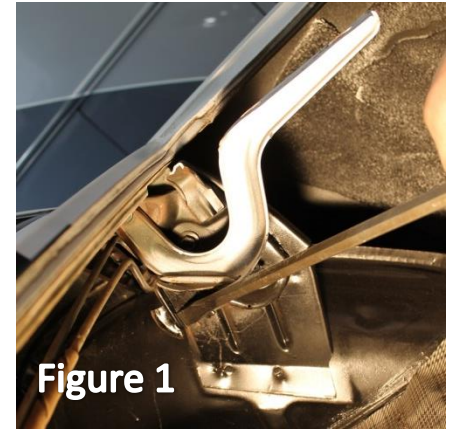
* Eddie Motorsport's trunk hinges are designed as direct replacement, bolt-on parts. However, due to the age of your vehicle, the lack of quality control that existed when it was originally built, and the vast array of (mostly imported) replacement sheet metal, our hinges may not fit exactly as they did on the vehicle(s) that we used to design them. The position of the torsion rod mounts may also vary from car to car, making it necessary to modify the mounting holes in the brackets and/or hinges to gain extra adjustment. If you cannot get your trunk lid to line up to your satisfaction and you feel that the fit is not to your liking, Eddie Motorsports, upon proof of purchase from us, will refund your money.

* Eddie Motorsports trunk hinges are supplied with a nitrogen filled gas strut that we have pre-determined to be the correct strength for your vehicle's deck lid. Should your lid be lighter or heavier than the original trunk lid that we tested, we will gladly exchange the struts for ones that have the strength to more adequately work with your specific application.

* Eddie Motorsports does not guarantee the function of our trunk hinges on lids that have been modified (i.e. added carpeting, padding, excessive customization, heavy bondo, mirrors or deck lid additions OF ANY KIND).

* Due to the extreme variance in construction quality, rigidity, and weight, Eddie Motorsports does not guarantee the function of our trunk hinges with fiberglass or carbon fiber deck lids.

1. Mark the position of the stock hinges on the trunk lid and remove the four bolts holding it to the hinges. Remove the trunk lid and place it in a safe place.
2. Using a large screw driver or small bar, twist the "hooked" end of the torsion bar away from the slots on the torsion rod bracket (figure 1). Once you have the end of each rod disconnected, you can remove the bars by twisting and pulling them through the brackets on the opposite ends.
3. Mark the position of the torsion rod bracket and remove it and the trunk hinges by unscrewing the two fasteners (figure 2).
4. Locate the hinge rivet on the back side of the bracket you removed. Use a Dremal or die grinder to grind off the head. Remove only the material necessary, being careful to grind the rivet only and do not elongate the hole. Separate the bracket from the hinge (figure 3).



5. Locate and mark the torsion rod bracket and fender well lip for mounting of the support rods (figure 4). Drill holes accordingly, apply anti-seize to the threads and attach with stainless steel fasteners provided.

6. Apply anti-seize to the threads and install the new 3/8" stainless steel hinge pin pointing towards the inside of the trunk. Fasten on the back side with a 3/8" nut and lock washer (figure 5).

7. Apply anti-seize to the threads on the new pin and install the Eddie Motorsports trunk hinges onto the bracket by sliding the end with the black delron bushings over the pin as shown (figure 6). Install the lock nut being careful not to over tighten. The hinge should rotate freely on the stud. Re-install the bracket in car.

8. On some cars, it may be necessary to bend or remove some of the existing bracketry to make clearance for the new hinges (figure 7).

9. Cut out and attach the drill templates supplied with the kit to the seat bracket as shown (figure 8).

10. Remove the small clips from the ends of the gas struts. Snap the 90 degree aluminum mounting bracket on one end and snap the other end onto the ball stud on the hood hinge (figure 9). (**NOTE:** There is a small inner clip in the strut ends. Should this become dislodged from its groove for any reason, the strut could be difficult to install on the ball stud. Check this if you are having trouble. Also, apply a small amount of grease on the ball stud helps to prevent this problem). Hold the mounting bracket up to the template to make sure that the angle and mounting point is correct. Adjust the template position if necessary.

11. Use a center punch to mark the hole locations. Using a 21/64 bit, drill the mounting holes. Apply anti-seize to the threads.

12. Remove the mounting bracket from the strut and fasten to the seat frame using two 1/4" bolts and nylon lock nuts.

13. Re-attach the strut to the bracket and re-insert the retaining clips on both ends of the struts.

14. Reinstall the trunk lid, attaching the hinge to the lid with the supplied stainless steel button head bolts, washers and aluminum washers (figure 10).

15. Realign the trunk lid on the car as necessary using your markings as a guide. Once you are satisfied with the fit, remove fasteners one at a time, apply Loctite and securely tighten.



Figure 5

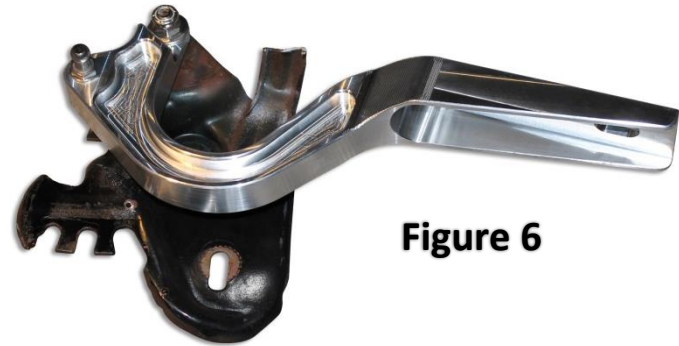


Figure 6

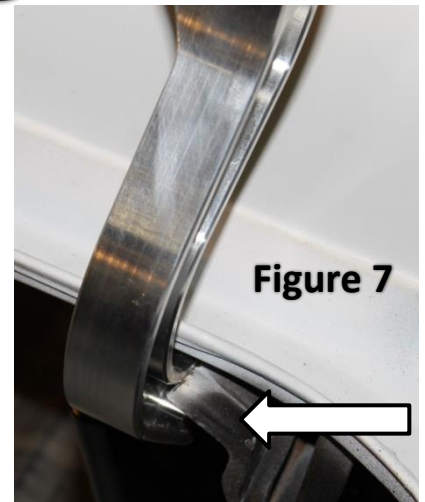


Figure 7

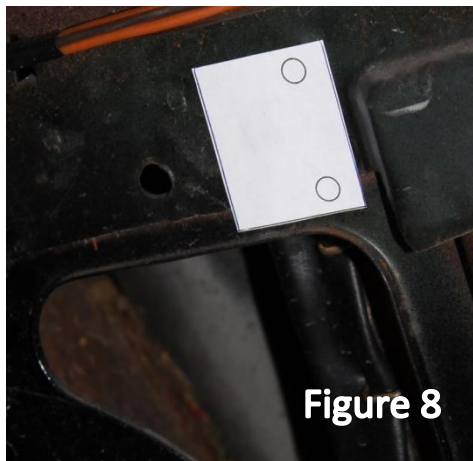


Figure 8

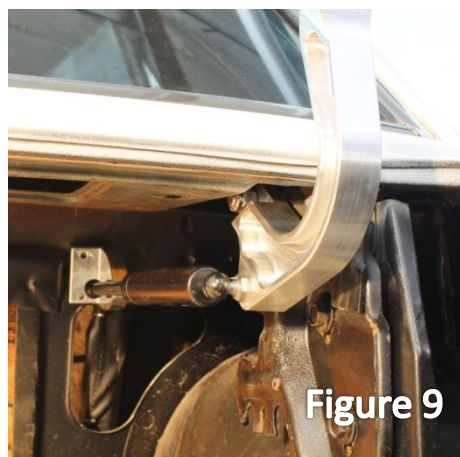


Figure 9



Figure 10

CONTACT EDDIE MOTORSPORTS WITH ANY QUESTIONS 888-813-1293 or
sales@eddiemotorsports.com www.eddiemotorsports.com

