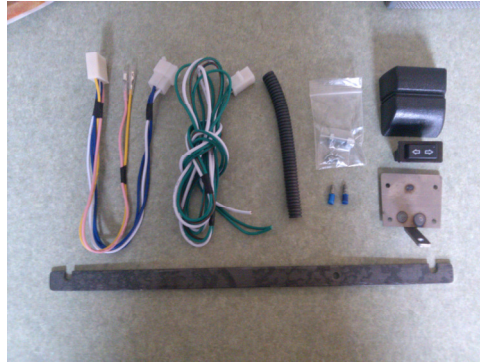


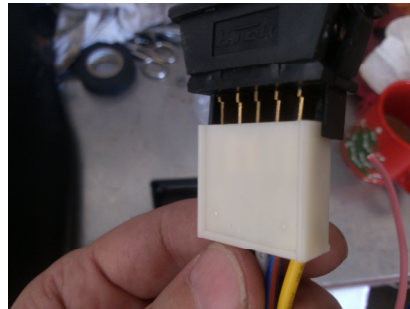
64 1/2 - 70 Mustang Switch Kit



1. If you are going to paint the case, do so now. I recommend you wipe the case down with a wax and grease remover, otherwise the case might get fish eye's spots when painting.



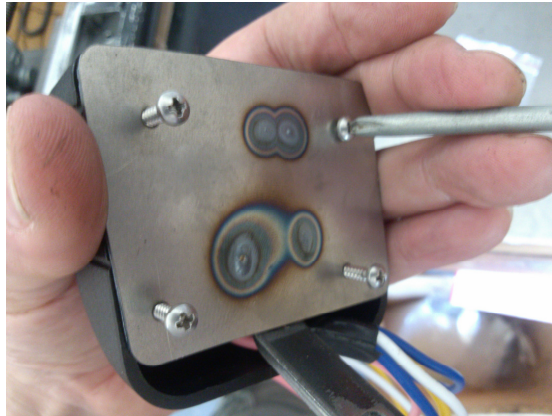
2. Attach the supplied switch harness to the power switch as shown.



3. Slide the harness through the opening on the case and snap the switch into the opening. Make sure the switch is fully seated. It can be a tight fit, so be patient and finesse the switch into place. If the switch is correctly seated, it will look as shown.



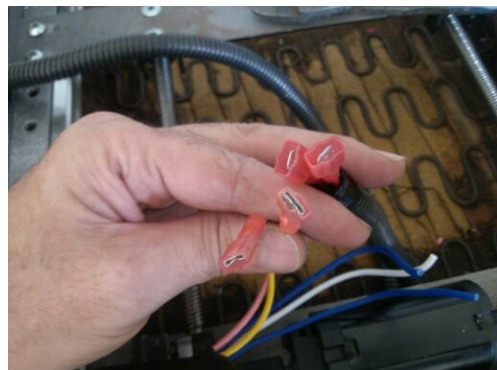
4. Attach the metal back plate to the case with the supplied screws.



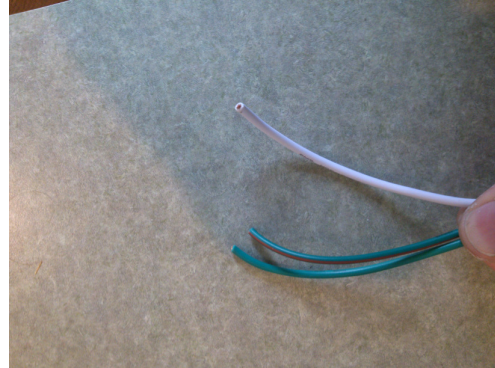
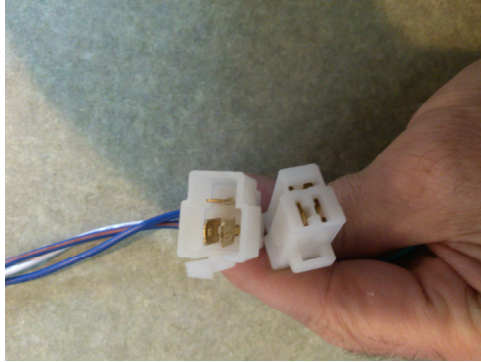
5. Attach the supplied male connector to each motor wire. Connectors in kit may be different than pictured.



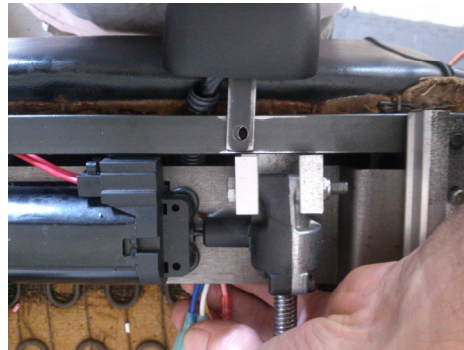
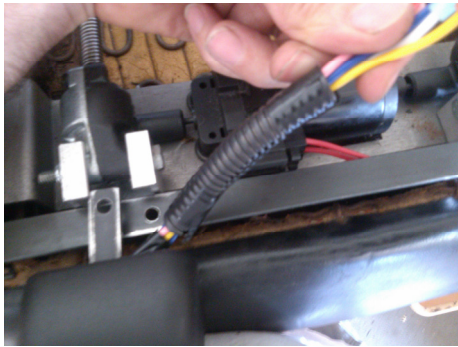
6. Plug the motor leads into the female ends of the supplied harness. The wire colors are pink and yellow coming from the switch. Don't worry about getting the wires hooked up backwards. You can swap them around to change direction of your switch operation. Again, the actual connector types may be different than pictured.



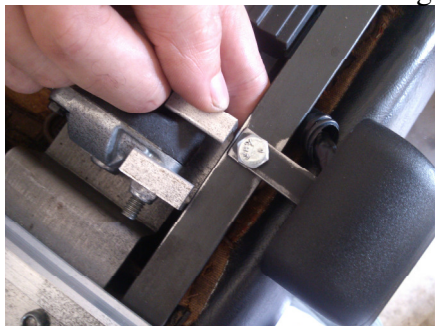
7. Attach the three prong connectors together. The cut off ends will need to be spliced into your car. The two wires that are the same color(one has a strip) are the grounds. The odd wire(white) is the power. Hook the power to a fused 12v power source.



8. Slide the short protective conduit over the wires and route them under the switch mounting bar and power seat unit.



9. Secure the switch to the mounting bar with supplied bolt and nut as shown.



10. Go back to step 10 on the seat track install instructions.