



1971-73 Rear Trunk Lid Spoiler Installation Instructions

Thank you for purchasing what we at National Parts Depot believe to be the finest reproduction wing made to date. The contours of the wing, stanchions and brackets are as correct as we can make them. The hardware included with this wing is supplied to us by AMK Products and is also as correct as original records allow. We ask you to proudly display this wing in MCA judged shows as we have received a Certificate of MCA Approval for a Concours Reproduction Part.

Read all instructions carefully and understand them before doing any actual work on the trunk lid or wing.



Outside mounting plate



Inside mounting plate

1) Wing assembly

A) Each stanchion is attached to the spoiler using a flat retainer plate, a pivot plate, six sheet metal screws, and an Allen head bolt and washer.

B) The stanchions fit either side. Lay the spoiler upside down on a non-abrasive surface. With the stanchion placed in the wing slot, lay in the flat retainer plate to the outside of the stanchion and tighten down with 3 sheet metal screws.

C) The pivot plate attaches to the inside of the stanchion with 3 more sheet metal screws.

D) Tighten the Allen head bolt with a washer through the retainer plate and into the stanchions threaded hole.

E) Screw the studs into the bottom of the stanchion.

F) Duplicate this process on the other side.

2) Wing Placement

A) Measure over 6 1/4" inches in from the side of the decklid. Run a strip of masking tape vertically over the 6 1/4" measurement.

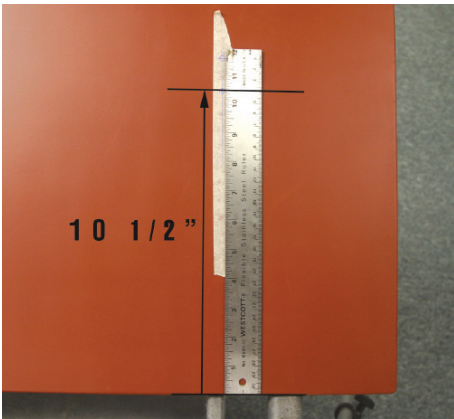
B) Measure down 10 1/2" inches from the front of the decklid. the point where this intersects the 6 1/4" side measurement is the front mounting hole. Use the template provided to mark the rear position on the masking tape.

C) Follow the same process for the other side.

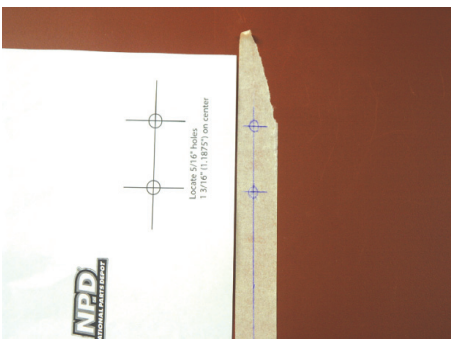
D) Carefully place the assembled wing over your marked masking tape to be sure the holes are aligned properly. Measure twice and check again. Once you are sure everything is in alignment, center punch the 4 holes. Use a 5/16" drill bit (Ford originally used a 19/64" bit but not everyone has that size handy). Protect the surrounding area if the decklid is painted. If the drill walks, the extra tape may provide extra protection from scraping up the paint. A good center punch will



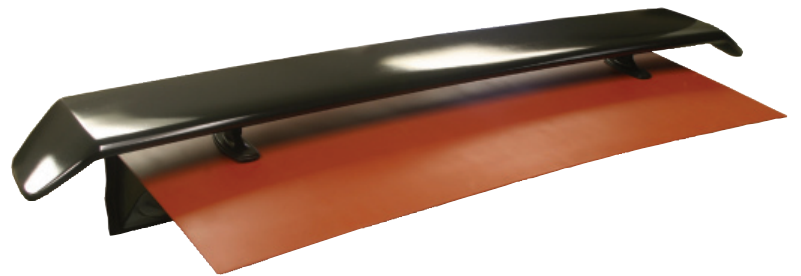
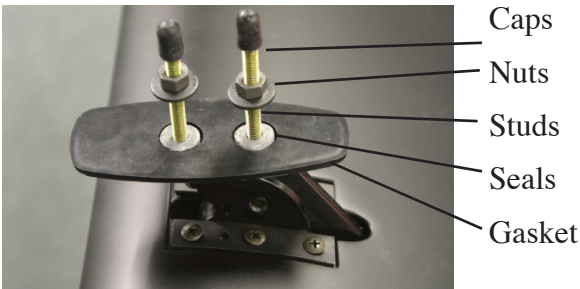
Measure from the side inward
6 1/4"



Measure from the front decklid edge rearward 10 1/2"



Use template to mark rear hole locations



prevent this though. Remember to double check your alignment before you drill!! (Original Ford decklids drilled from the factory have been known to be off as much as 1/8")

E) Dress holes with primer, touch-up paint or POR-15 to prevent rust. Scuff and paint wing and stanchions as desired.

3) Wing Mounting

A) Place sealing washers on wing studs.

B) Place stanchion gaskets over studs.

C) Carefully lower wing into holes in trunk lid.

Be careful to not scratch the paint!

D) Install the nuts with spin washers to the studs and tighten.

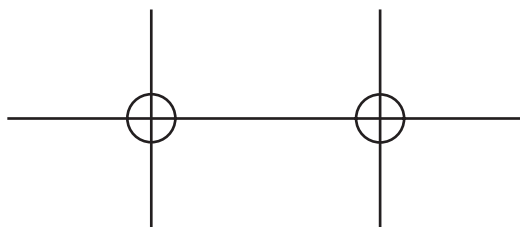
Make sure wing is square and gasket lips surround the stanchions.

E) Cover exposed stud ends with rubber caps.

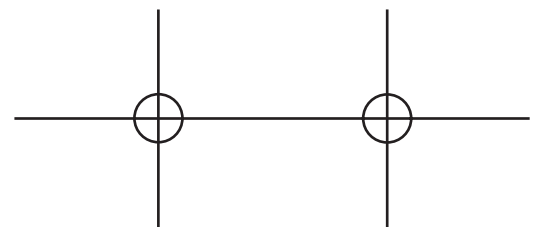
F) Adjust wing angle by loosening both Allen head bolts, adjust angle to desired position and retighten bolts.

G) Decklid torsion rods may need to be adjusted to support the wings weight. Adjust the center torsion rod retainer (spring steel on early cars, rubber on later cars) or adjust torsion rods at the hinge brackets for more support.

Thank you for purchasing our rear wing. We are very proud of it and we hope you enjoy it as much as we enjoy being your parts supplier!
National Parts Depot



Locate 5/16" holes
1 3/16" (1.1875") on center



Locate 5/16" holes
1 3/16" (1.1875") on center