

INSTRUCTION SHEET

HOLLEY CARBURETOR - MODEL 2300

50-301

SHOWING THE LATE DESIGN SAFETY SEAL ADJUSTABLE NEEDLE AND SEAT ASSEMBLY

DISASSEMBLY

1. USE EXPLODED VIEW ON OPPOSITE SIDE OF THIS SHEET AS A GUIDE. THE NUMERICAL SEQUENCE MAY GENERALLY BE FOLLOWED TO DISASSEMBLE UNIT FAR ENOUGH TO PERMIT CLEANING AND INSPECTION.

CLEANING

2. SOAK PARTS LONG ENOUGH TO SOFTEN AND REMOVE ALL FOREIGN MATERIAL. USE (1) A CARBURETOR CLEANING SOLVENT (2) LACQUER THINNER OR (3) DENATURED ALCOHOL. MAKE CERTAIN THE THROTTLE BODY IS FREE OF ALL HARD CARBON DEPOSITS. RINSE OFF IN SUITABLE SOLVENT AND BLOW OUT ALL PASSAGES IN CASTING WITH COMPRESSED AIR AND CHECK CAREFULLY TO INSURE THOROUGH CLEANING OF OBSCURE AREAS. CAUTION: DO NOT SOAK RUBBER, LEATHER OR PLASTIC PARTS IN SOLVENT.

REASSEMBLY

3. REASSEMBLE THE CARBURETOR USING THE REVERSE ORDER OF DISASSEMBLY. NOTE: WHEN INSTALLING IDLE ADJUSTING NEEDLES (15), RUN THEM DOWN UNTIL THEY SEAT LIGHTLY, THEN BACK THEM OUT ONE TURN. AFTER INSTALLING THE FLOAT, POSITION THE FUEL BOWL UPSIDE DOWN AND ADJUST THE FLOAT AS OUTLINED IN STEP 1 OF FLOAT LEVEL ADJUSTMENT.

ADJUSTMENTS

1. **FLOAT LEVEL.** SEE FIG. 1. STEP 1. WITH FUEL BOWL IN AN INVERTED POSITION, TURN THE ADJUSTING SCREW SLOT UNTIL THE TOP OF THE FLOAT IS PARALLEL WITH THE TOP OF THE FUEL BOWL. TIGHTEN LOCKNUT SNUGLY. STEP 2. WITH CAR ON A LEVEL FLOOR, BRING ENGINE TO NORMAL OPERATING TEMPERATURE, REMOVE PLUG FROM SIDE OF BOWL AND ADJUST RUNNING FUEL LEVEL TO BE AT LOWER EDGE OF INSPECTION HOLE. TIGHTEN LOCKNUT AND REPLACE SIGHT PLUG.

2. **PUMP ADJUSTMENT.** (A) WITH PUMP CAM (SEE FIG. 4) IN NO. 1 POSITION (62-64 RAMBLER AND WILLYS NO. 2 POSITION) (B) (SEE FIG. 2). THROTTLE HELD IN WIDE OPEN POSITION AND THE PUMP OPERATING ARM HELD IN A FULLY COMPRESSED POSITION, CHECK THE CLEARANCE BETWEEN THE ADJUSTING NUT AND THE PUMP OPERATING ARM. THE CLEARANCE SHOULD BE .015. TO ADJUST, TURN SCREW.

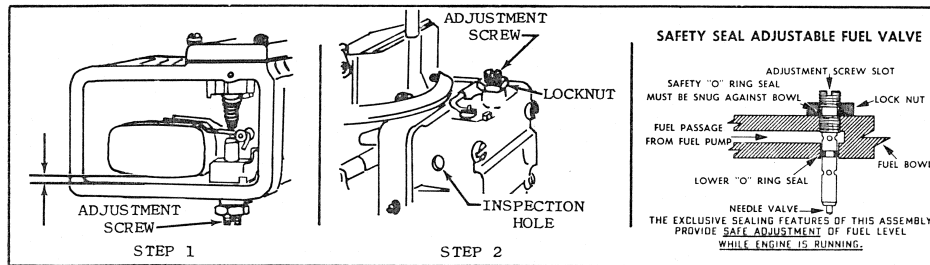
3. **BOWL VENT ADJUSTMENT:** WITH THROTTLE VALVE FULLY CLOSED, DISTANCE BETWEEN TOP OF FUEL BOWL AND VENT BUTTON SHOULD BE 1/16". TO ADJUST, BEND VENT ARM AT ACCELERATING PUMP LEVER. CAUTION: FORD AND MERCURY NO ADJUSTMENT REQUIRED. (SEE FIG. 3).

4. **AUTOMATIC CHOKE SETTING:** ALIGN MARK ON STAT COIL WITH INDEX ON CHOKE HOUSING, ALLOWABLE VARIATIONS, 2 MARKS EITHER WAY FROM INDEX.

5. **SLOW IDLE ADJUSTMENT:** ENGINE AT OPERATING TEMP., AND CHOKE WIDE OPEN, ADJUST IDLE MIXTURE NEEDLES (15) TO A SMOOTH IDLE. ADJUST IDLE STOP SCREW TO 500-550 R.P.M. (SEE FIG. 4).

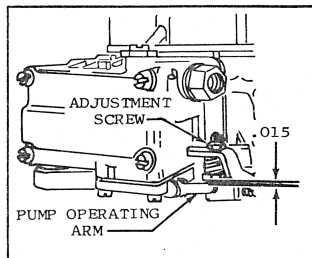
6. **FAST IDLE ADJUSTMENT:** PLACE FAST IDLE SCREW ON HIGH STEP OF FAST IDLE CAM AND SET TO 1600-1700 R.P.M. (SEE FIG. 5).

7. **DASHPOT ADJUSTMENT:** THIS ADJUSTMENT IS MADE WITH CARBURETOR SET AT PROPER IDLE SPEED. DEPRESS DASHPOT PLUNGER FULLY. THE DISTANCE BETWEEN THE PLUNGER AND THROTTLE LEVER SHOULD BE 5/64". TO ADJUST, LOOSEN LOCKNUT AND ROTATE DASHPOT ASSEMBLY. RETIGHTEN LOCKNUT. (SEE FIG. 3).

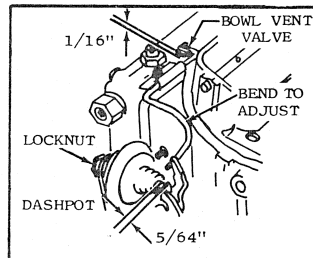


FLOAT LEVEL ADJUSTMENT

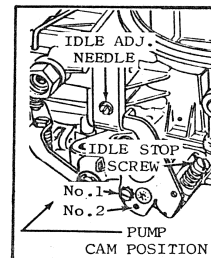
Fig.1



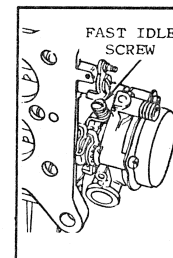
PUMP ADJUSTMENT Fig.2



BOWL VENT AND DASHPOT ADJUSTMENT Fig.3



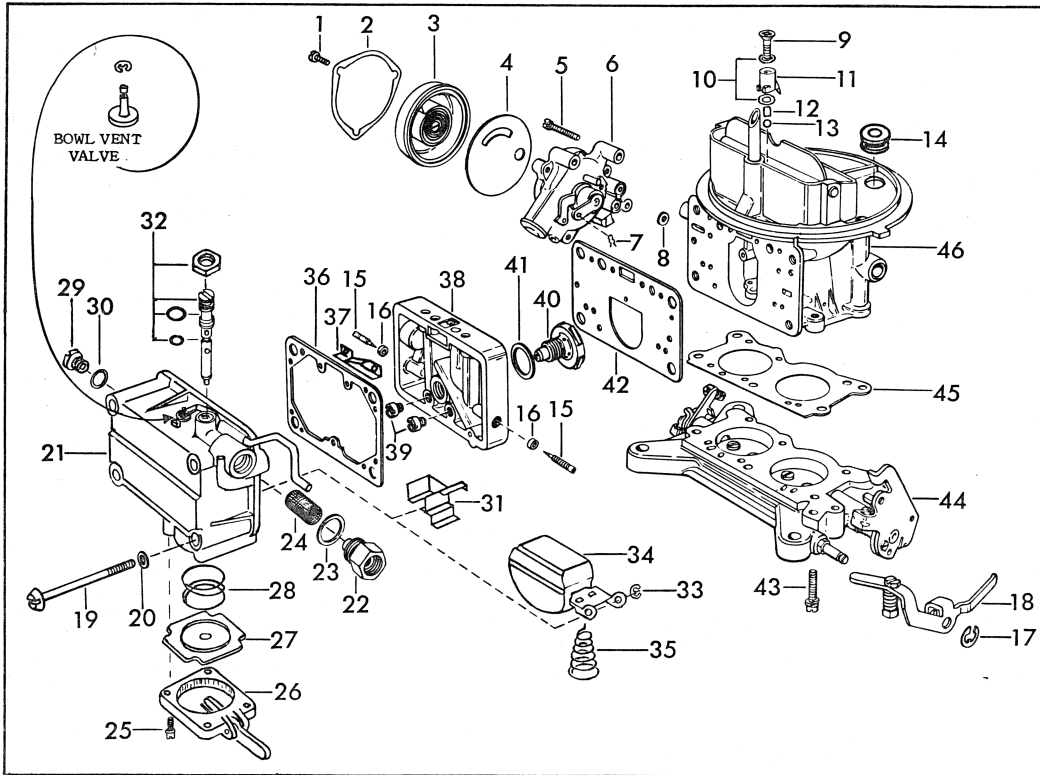
SLOW IDLE ADJUSTMENT Fig.4



FAST IDLE ADJUSTMENT Fig.5

GENERAL EXPLODED VIEW

THE GENERAL DESIGN AND PARTS SHOWN WILL VARY TO
INDIVIDUAL UNITS COVERED ON THIS INSTRUCTION SHEET.



NOMENCLATURE

REF. NO.	REF. NO.
1. SCREW-STAT COVER	25. SCREW & LOCKWASHER-PUMP COVER
2. CLAMP-STAT COVER	26. PUMP COVER ASSEMBLY
3. STAT COVER	27. DIAPHRAGM-PUMP
4. GASKET-STAT COVER	28. SPRING-DIAPHRAGM RETURN
5. SCREW & LOCKWASHER-CHOKE HOUSING ASSY.	29. PLUG-FUEL LEVEL
6. CHOKE HOUSING ASSY.	30. GASKET-FUEL LEVEL PLUG
7. RETAINER-CHOKE ROD LOWER	31. Baffle PLATE
8. GASKET-CHOKE HOUSING	32. NEEDLE, SEAT, O-RINGS & NUT ASSEMBLY
9. SCREW-PUMP DISCHARGE NOZZLE	33. RETAINER-FLOAT
10. GASKETS-PUMP DISCHARGE NOZZLE	34. FLOAT ASSEMBLY
11. NOZZLE-PUMP DISCHARGE	35. SPRING-FLOAT
12. WEIGHT-PUMP CHECK BALL	36. GASKET-FUEL BOWL
13. BALL-PUMP DISCHARGE CHECK	37. Baffle-METERING BODY VENT
14. GROMMET-COLD AIR CHOKE TUBE	38. BODY-MAIN METERING
15. NEEDLE-IDLE ADJUSTING	39. MAIN JETS
16. SEAL-IDLE NEEDLE	40. POWER VALVE
17. RETAINER-PUMP OPERATING LEVER	41. GASKET-POWER VALVE
18. LEVER-PUMP OPERATING	42. GASKET-METERING BODY
19. SCREW-FUEL BOWL	43. SCREW & LOCKWASHER-THROTTLE BODY
20. GASKET-FUEL BOWL SCREW	44. THROTTLE BODY ASSEMBLY
21. FUEL BOWL ASSEMBLY	45. GASKET-THROTTLE BODY
22. FITTING-FUEL INLET	46. MAIN BODY ASSEMBLY
23. GASKET-FUEL INLET FITTING	
24. SCREEN-FUEL INLET	