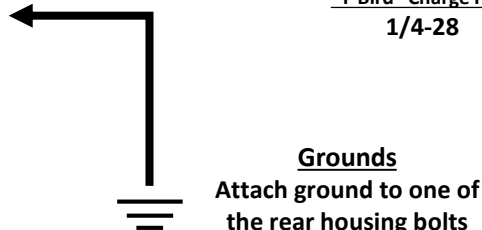
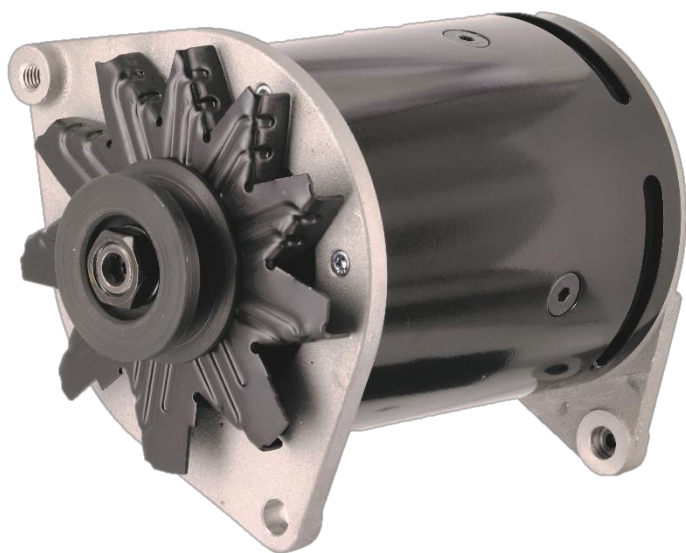
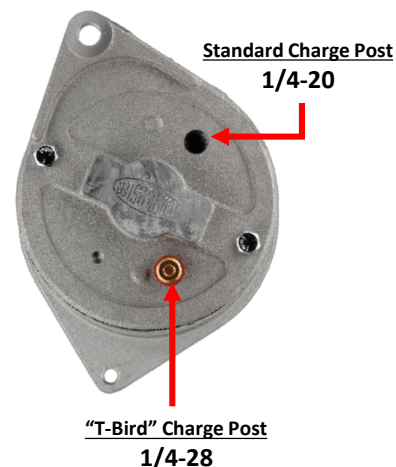
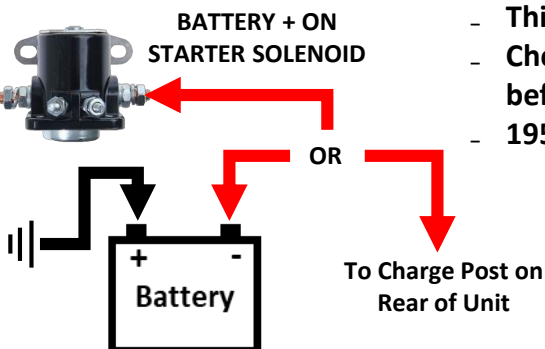




## ALTERNATOR WIRING INSTRUCTIONS

### Important Notes: (6V + Ground ONLY)

- These units are internally regulated and the OE external regulator must be bypassed, removed, or used for appearance only
- All units supplied with pulley for 3/8" V belt (55-56 T-Bird units supplied with 1/2" V belt pulley)
- This unit is designed for 6.04" wide mounting bracket
- Check unit fitment on bracket and shim accordingly with washers before tightening any bolts.
- 1955-56 T Bird applications see additional mounting info



### Disconnect Battery Negative (-)

### READ ALL INSTRUCTIONS IN BOX!

**Charge Wires:** Use 8 gauge power cable up to 6 ft.

**Ammeters:** Do not reconnect the factory ammeter when using these units. Factory ammeters are typically limited to 30 amps. Please consider a volt gauge to monitor your charging system.

**Alternator Ground:** The OE bracket will not supply a solid alternator ground. Always add an 8 gauge ground lead from the alternator housing to engine block.

**Battery must have a clean ground to engine block.**

**Wire Connections:** Be sure all terminals are crimped securely, and connections are clean and tight.

**Belt Tension:** Inspect belt for signs of cracking or glazing. Replace if needed. **A loose belt will cause intermittent charging and generate excessive heat resulting in premature unit/bearing failure. Keep in mind "Alternator tight not generator loose".**

**A fully charged battery is at least 6.4V, not 6V.** A weak/defective battery will cause premature failure. **Never disconnect the battery with engine running!** This causes voltage spikes that will damage the alternator. When working correctly 6V units will produce 6.8-7.3V.

**FAILURE TO FOLLOW THESE INSTRUCTIONS MAY VOID YOUR WARRANTY**