



Rear Seat Delete Mustang Coupe 94-04

READ ALL INSTRUCTIONS BEFORE INSTALLATION

NOTE: This kit is NOT a replacement seat. It is not designed or safe to hold the weight of a human body.

Removal of rear seats:

- 1.) Remove lower seat cushion by pushing in the locking tabs directly under the front of the seat. There is one on each side in the center of each seat. You will need a screwdriver to push in the tab as you lift up. →
- 2.) Remove the white locking clips (8mm) →
- 3.) Remove the upper headrest over the seat back by removing the 3 bolts. You will need to fold down the rear seats to see these bolts.
- 4.) Remove the rear seat back assembly: First pop out the (4) plastic fasteners holding the trunk mat in place. (You can get to these from the interior by folding down the seats.) Take off the 2 bolts on the bottom of the seat unit, one left, one right. Next, remove the 2 bolts holding the top in place. The whole 26lb unit should then pull off and out of the car.
- 5.) **2004 Model ONLY:** There is an additional child-seat bar (not pictured) to be removed on some 04 Mustangs. Remove the bolts and bar. You may have to cut the top portion of the studs that protrude from the transmission tunnel.



Rear Seat Belt Removal (optional)

Removal of the rear seat belt assemblies is not required but it will shave off another 5 lbs as well as make the kit more appealing. The rear seat belts are not usable once the RSD is installed.

1. Remove the lower seat belt connectors.
2. The upper piece of the seat belt assembly requires removal of the rear side panels. Remove the 3 plastic fasteners on each side where the seat back used to go. →
3. Remove the coat hooks.
4. ← Remove the 2 small plastic pins holding in the rubber boot near the doorjamb.
5. Slide the edge of the plastic at the doorjamb over the lip to free the panel.
6. Remove the plastic panel covering the rear defroster plug at the rear window.
7. Remove the Torx bolts (T50) to the seatbelt assembly and remove from the car.
8. Reinstall side panels before installing RSD.

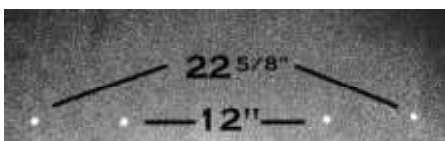


Installation of new Rear Seat Delete

1.) **TEST FIT:** Carefully set the new back section in the car to test fit the product. It will have to push past the plastic "points" near the top edge to fit flush. If you have an '03-04 the studs on the transmission tunnel need to be cut in order for the RSD to fit properly. (Or notch the plastic of the RSD if it's not already done.)



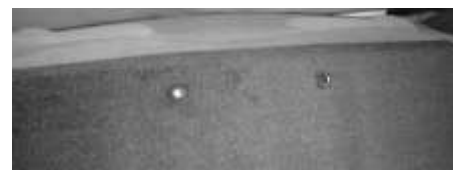
2.) ← Take the back panel out of the car so you can cut the mounting holes. On the backside of the panel, you will see 4 pre-drilled holes in the plastic. You will only need two of them. In 2001, the location of the mounting bolts changed. **You will either use the 2 outer holes or the inner holes, NOT all 4.**



3.) Measure on your car, the distance between the 2 factory holes on the rear brace. Using that measurement, determine which set of holes you will be using on the seat delete kit. We are not liable if you cut the wrong holes!

4.) You will need to use a sharp hobby knife to slit the carpet inside the holes you choose, so that the included bolts can mount the panel to the car. Re-install the back panel in the car once you have the holes cut.

5.) Using the included hardware, mount the back panel. DO NOT over tighten! You only need them to be snug. You can also opt to use black plastic screw caps from your local hardware store to further conceal the bolt heads if desired.



6.) **The bottom panels.** Simply place them in the car, and the Velcro strips align to hold the panels in the car. You're Done!

Color instructions are available online at: www.shraderperformance.com/install/mustang9404.pdf